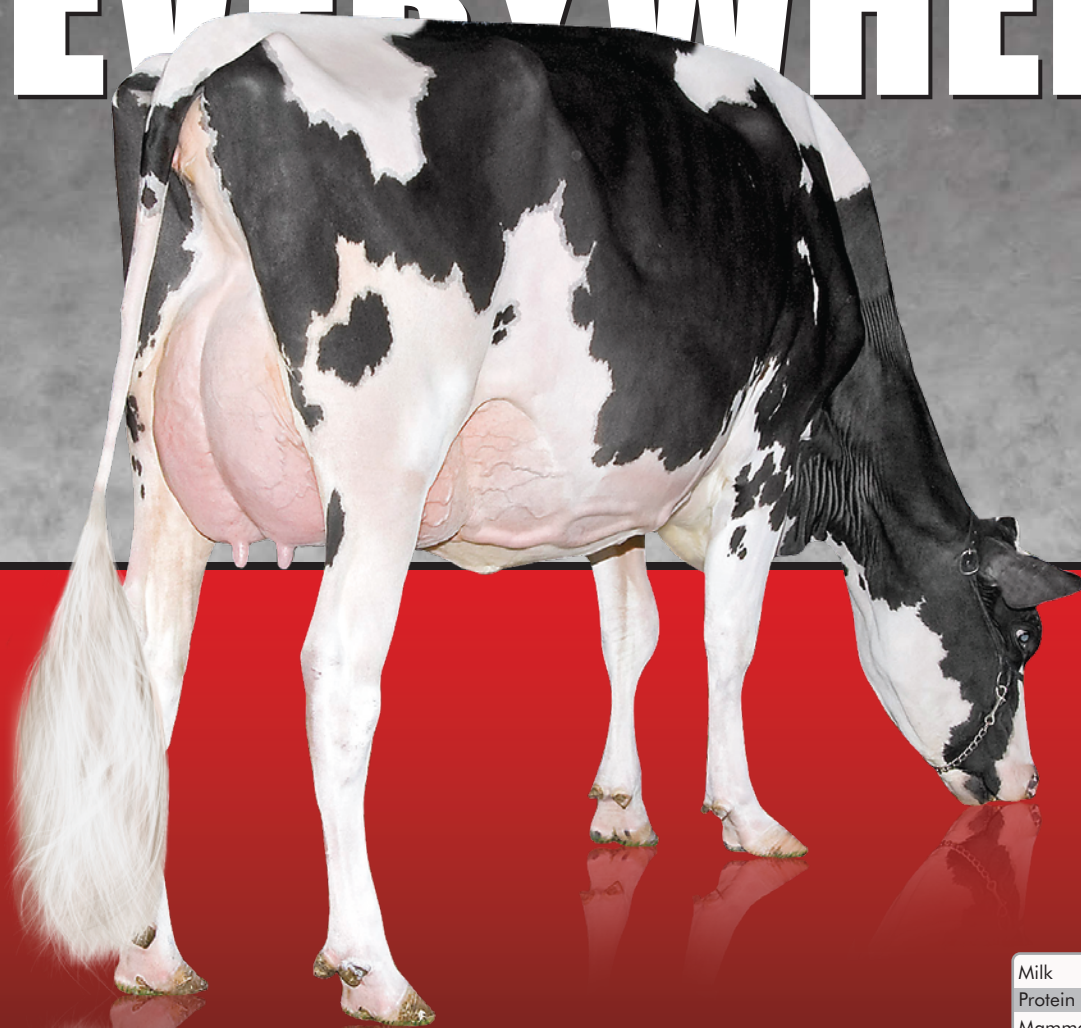


Milking 50, 500 or 5000 cows

SEMEX WORKS EVERYWHERE



**M V DINA WINDSTORM
N/C**

Massicotte Holstein Inc.,
Champlain, PQ, Canada
Photo: Vicki Fletcher

Milk	+2273 kg
Protein	+55 kg
Mammary System	+12
Rear Udder Width	+15
Median Suspensory	+15

(GEBV 10*APR)

0 2 0 0 H O 0 3 4 8 8

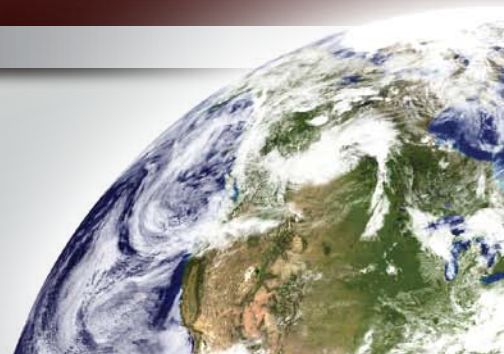
GILLETTE WINDSTORM

GP-CAN

Modest x Blitz x Storm

**SEMEX**[®]

The Power of Balanced Breeding[®]



Benefit To The Customer	
High Conformation	Conformation is one of the cornerstones of breeding productive, long-lasting cattle. Windstorms have the correct conformation to deliver profitable, long-lasting results that breeders will be satisfied with for many lactations
Dairy Strength	Open rib structure and wide through their chests, Windstorms have the strength and capacity to be healthy and profitable. Dairy cows with wide chests and an open rib structure are more often able to take in larger volumes of forages and convert them into large volumes of milk
Udder Texture	A soft udder quality allows for the udder to be healthier and milk out easily, decreasing the incidence of mastitis. A softer udder will decrease udder health issues and related expenses for the dairyman. A softer udder is also generally able to handle increased production more easily as the cow matures through each lactation
Strong Median Suspensory Ligament	It takes all of the attachments and support mechanisms to maintain the udder's youthfulness and longevity. But the most important support agent to many is the median suspensory ligament. Windstorms' ligaments will help preserve the udder shape by keeping the teats nicely under each quarter, maintaining a level and functional udder floor
High Rear Udder Attachment	Another important component for udder longevity is the strength of the rear udder, which comes from how high the rear udder is attached. Windstorms' rear udders are attached very high, giving them added strength. This strength increases the rear udder's longevity and gives more volume to the mammary system for milk production
High Milk Production	Milk production is one of the main components to maximize profitability. Windstorms are exceeding production expectations and are considered extremely profitable through their milk production. Their good fat and protein weights will compliment their milk weights, providing profitable milk production results
High Reliability	Windstorm will have a large number of daughters in his proof. Reliability is still and always should be a component of selection criteria. It is important for breeders to use high reliability sires to minimize their risk and provide them with the results they expect
Proven Pedigree	Windstorm traces back to the Gypsy Grands, which has delivered the industry with great sires like Goldwyn and Final Cut. Windstorm's dam is one of the highest ranked cows in Canada and her genetics are sought after worldwide. This pedigree should will provide added confidence to dairymen worldwide
An Interesting Sire Stack	Windstorm's sire Modest, was a Durham son that was very popular when he was first released, but unexpectedly passed away early in his career. The first dam was a Blitz, giving a different twist to the sire stack from many of the top sires that are available today
How To Handle Potential Objections	
SCS	Windstorm does have a high SCS rating and it may be an issue for many breeders. This was a trait that was seen in both paternal sides of his pedigree through Blitz and Modest. Windstorm's advantage, however, is his great udder quality. When crossed to a low SCS cow, the mating should be complimentary
Minus Deviations	Like with many high milk production sires, Windstorm does have negative figures for his fat and protein deviations. This was a trait that his sire was often criticized for and yet sold doses all over the world. His milk weights will combine very nicely with cows that have high components and will result in suitable levels of total production
Windstorm has come along at a perfect time when breeders are looking for a new high type sire with an interesting pedigree. Like all sires there are sacrifices to be made, but when you look at all of the great type and production that Windstorm offers there is no doubt that he will be able to positively contribute by adding exceptional strength, udder quality and total volume of milk production.	
Mating criteria	
Use on cows that lack strength, quality and udder texture with good fat and protein percentages	