

Combines extremely high *Milk* with superior *Type*

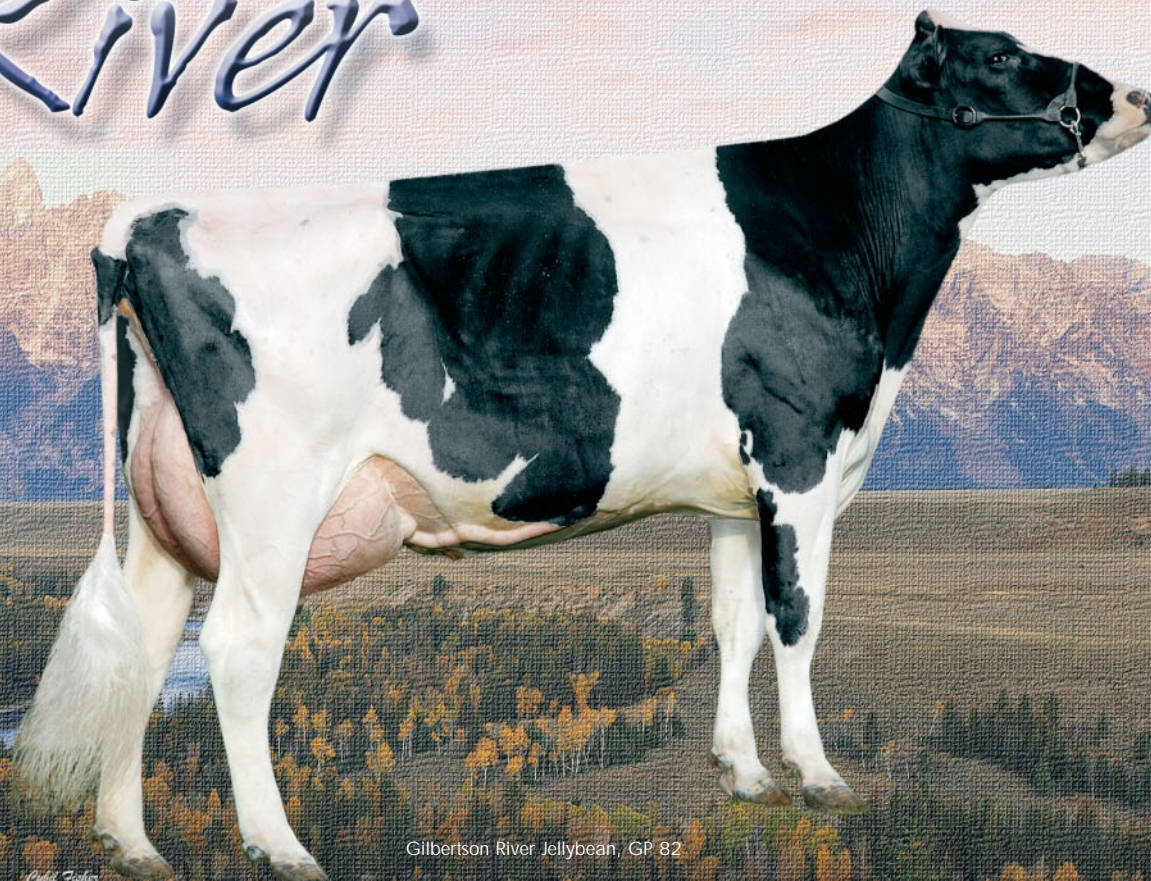
- ≈ Breed leading milk sire
- ≈ Calving ease at 8% SCE and 7% DCE
- ≈ Excellent overall type
- ≈ High ranking TPI sire



River-Gorge #1787

14HO4438 River-Gorge Morty Kieth-ET-TV-TL

River



Gilbertson River Jellybean, GP 82

De-Su River #6609



River-Gorge #1787

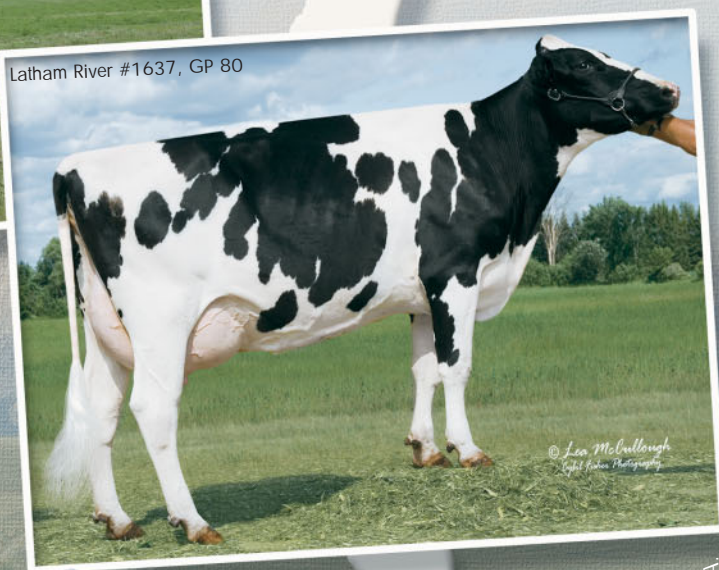


Milk

Extreme milk, fat and protein production
High Net Merit \$ sire
High, wide and capacious rear udders
Backed by three DOM & GMD dams

flows
like a

Latham River #1637, GP 80



Type

Adds stature, strength, depth and width
Daughters are straighter in the leg with
some slope from hooks to pins
Shallow udder depth

Dam: River-Gorge Manfred Kay-ET, VG 87
3-08 365d 17,895 kgM 3.5% 627 kgF 3.2% 564 kgP
Lifetime: 56,818 kgM 3.7% 2106 kgF 3.2% 1804 kgP

MGD: Roylane Bellwood Kish-ET, VG 86
2-01 365d 14,177 kgM 3.6% 516 kgF 3.0% 421 kgP

MGGD: Roylane Mascot Kate, VG 87, EX-MS
3-02 365d 15,086 kgM 3.5% 525 kgF 3.0% 460 kgP

River

Morty x VG Manfred x VG Bellwood x VG Mascot

WORLD WIDE SIRES, LTD.®

www.wwsires.com • Email: info@wwsires.com • Tel: 559.622.2222 • Fax: 559.741.2828



Product of the U.S.A.

River/081